

INVESTMENT AUCTION

THURSDAY

FEBRUARY 5TH

SALE 1
1:30 PM

2.11 ACRES, HWY. 11E
Jefferson City (Near Wal-Mart)

Zoned B-3

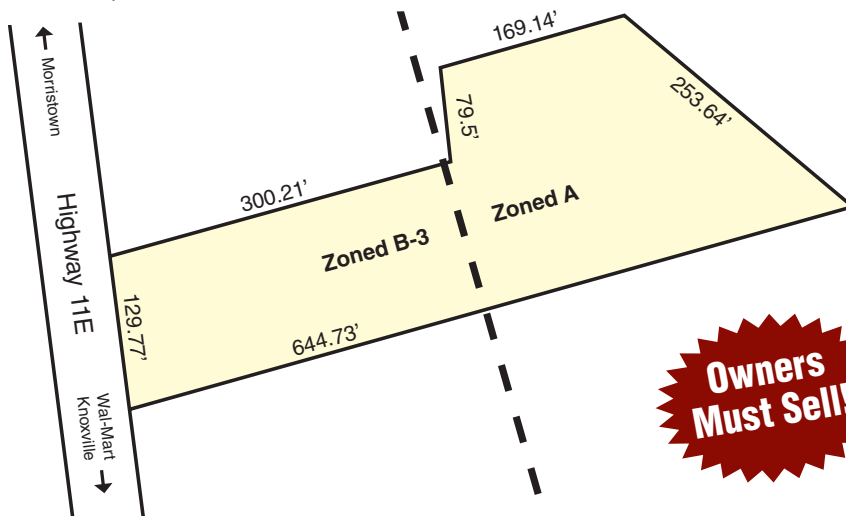
Choice Business Site

Zoned B-3, 130' of highway frontage. All utilities available! Land lays level. Great opportunity!

Possible Uses:

- Retail
- Auto Sales
- Fast Food
- Offices
- Restaurant
- Motel, etc.

Directions: On Hwy. 11E in Jefferson City about 1,000' from Wal-Mart & Lowe's-- opposite side of highway.



Owners Must Sell!

SALE 2
4:30 PM

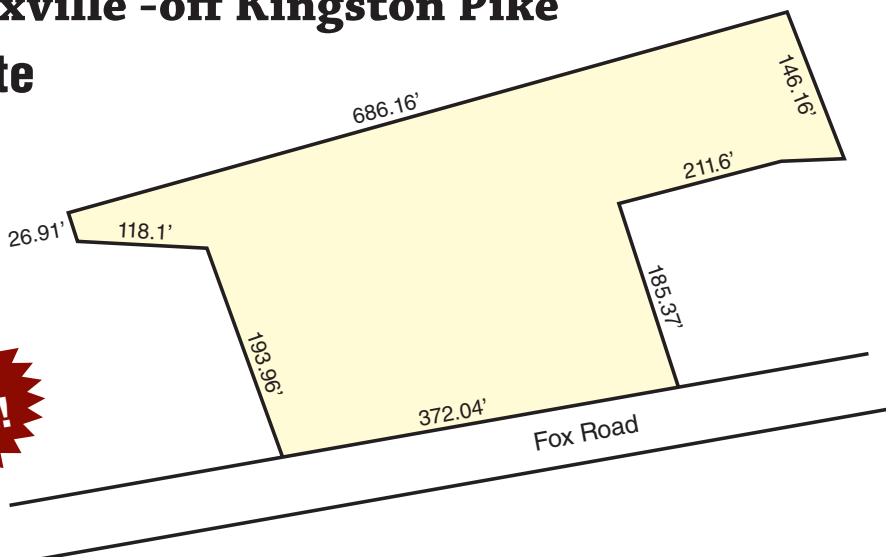
4 ACRES, FOX RD.
West Knoxville -off Kingston Pike

Zoned OB

Offices/Medical Building Site

Fronts 370' + on Fox Road. Zoned OB for Offices/Medical & Related Services. Very visible from Pellissippi Parkway. Perfectly laid out for a 10,000' + building. Lots of Parking!

Directions: Kingston Pike to Fox Road (Sun Trust Bank), go 1 mile, property on right.



This Land Must Sell!

Terms: 10% deposit day of sale, balance in 30 days. 10% buyer's premium added to final bid.

Slyman AUCTION

865-521-7416
www.SlymanAuction.com

Lic. 1216