

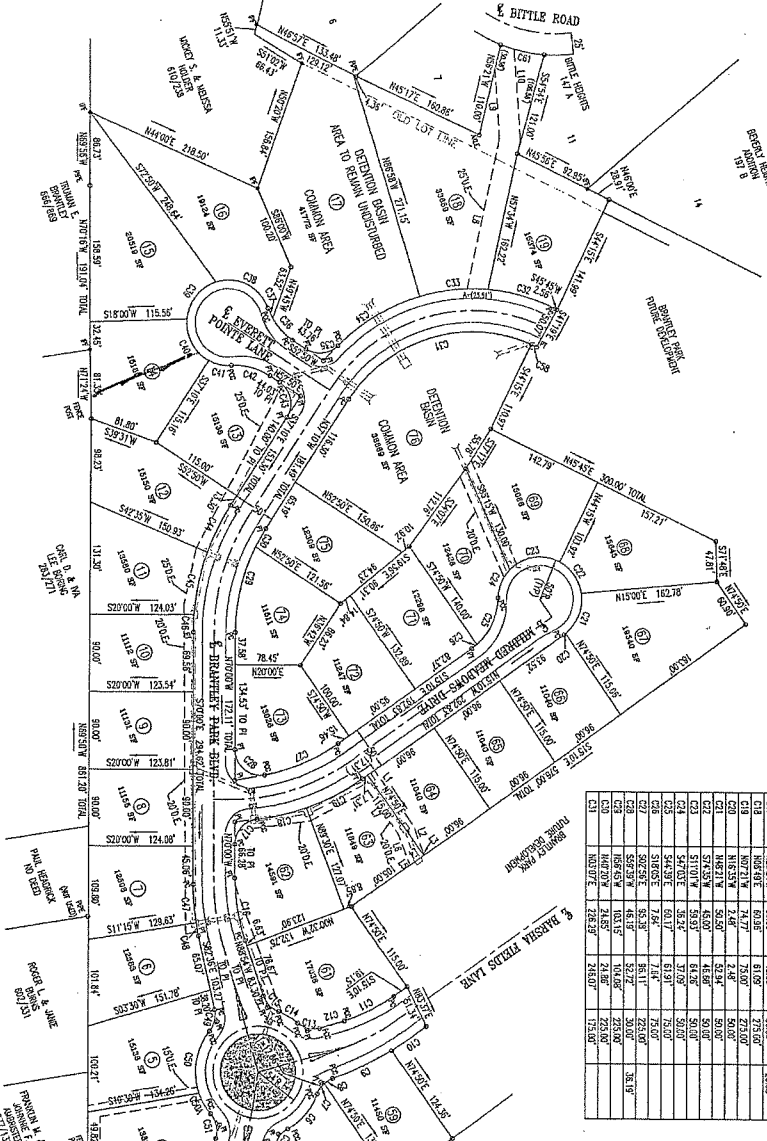
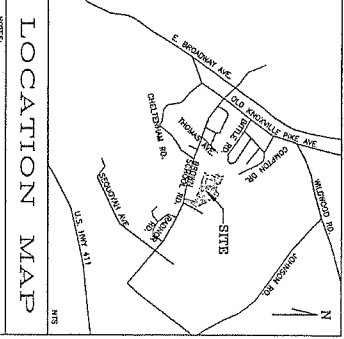
781-7442

CERTIFICATE OF THE APPROVAL OF ROAD WAYS AND PROPERTY NUMBERS
 THE SHEDS AND OTHER IMPROVEMENTS
 HAVING BEEN INSTALLED IN AN ASSEMBLY
 OF THE BOARD OF PUBLIC WORKS AND THE
 BOARD OF PUBLIC WORKS STANDARDS IN THE COUNCILMAN JOHN HEWITT
 DATE _____ 20 _____ KNOXVILLE CITY ENGINEER

CERTIFICATE OF APPROVAL OF ROAD WAYS AND PROPERTY NUMBERS
 THE SHEDS AND OTHER IMPROVEMENTS
 HAVING BEEN INSTALLED IN AN ASSEMBLY
 OF THE BOARD OF PUBLIC WORKS AND THE
 BOARD OF PUBLIC WORKS STANDARDS IN THE COUNCILMAN JOHN HEWITT
 DATE _____ 20 _____ KNOXVILLE CITY ENGINEER

OWNER	SECTION	AREA	ACRES	PERMITS	INVESTMENT
C1	50.000	24.11	29.27	30.00	12.00
C2	50.000	21.55	21.55	21.55	21.55
C3	50.000	21.55	21.55	21.55	21.55
C4	50.000	21.55	21.55	21.55	21.55
C5	50.000	21.55	21.55	21.55	21.55
C6	50.000	21.55	21.55	21.55	21.55
C7	50.000	21.55	21.55	21.55	21.55
C8	50.000	21.55	21.55	21.55	21.55
C9	50.000	21.55	21.55	21.55	21.55
C10	50.000	21.55	21.55	21.55	21.55
C11	50.000	21.55	21.55	21.55	21.55
C12	50.000	21.55	21.55	21.55	21.55
C13	50.000	21.55	21.55	21.55	21.55
C14	50.000	21.55	21.55	21.55	21.55
C15	50.000	21.55	21.55	21.55	21.55
C16	50.000	21.55	21.55	21.55	21.55
C17	50.000	21.55	21.55	21.55	21.55
C18	50.000	21.55	21.55	21.55	21.55
C19	50.000	21.55	21.55	21.55	21.55
C20	50.000	21.55	21.55	21.55	21.55
C21	50.000	21.55	21.55	21.55	21.55
C22	50.000	21.55	21.55	21.55	21.55
C23	50.000	21.55	21.55	21.55	21.55
C24	50.000	21.55	21.55	21.55	21.55
C25	50.000	21.55	21.55	21.55	21.55
C26	50.000	21.55	21.55	21.55	21.55
C27	50.000	21.55	21.55	21.55	21.55
C28	50.000	21.55	21.55	21.55	21.55
C29	50.000	21.55	21.55	21.55	21.55
C30	50.000	21.55	21.55	21.55	21.55
C31	50.000	21.55	21.55	21.55	21.55
C32	50.000	21.55	21.55	21.55	21.55
C33	50.000	21.55	21.55	21.55	21.55
C34	50.000	21.55	21.55	21.55	21.55
C35	50.000	21.55	21.55	21.55	21.55
C36	50.000	21.55	21.55	21.55	21.55
C37	50.000	21.55	21.55	21.55	21.55
C38	50.000	21.55	21.55	21.55	21.55
C39	50.000	21.55	21.55	21.55	21.55
C40	50.000	21.55	21.55	21.55	21.55
C41	50.000	21.55	21.55	21.55	21.55
C42	50.000	21.55	21.55	21.55	21.55
C43	50.000	21.55	21.55	21.55	21.55
C44	50.000	21.55	21.55	21.55	21.55
C45	50.000	21.55	21.55	21.55	21.55
C46	50.000	21.55	21.55	21.55	21.55
C47	50.000	21.55	21.55	21.55	21.55
C48	50.000	21.55	21.55	21.55	21.55
C49	50.000	21.55	21.55	21.55	21.55
C50	50.000	21.55	21.55	21.55	21.55
C51	50.000	21.55	21.55	21.55	21.55
C52	50.000	21.55	21.55	21.55	21.55
C53	50.000	21.55	21.55	21.55	21.55
C54	50.000	21.55	21.55	21.55	21.55
C55	50.000	21.55	21.55	21.55	21.55
C56	50.000	21.55	21.55	21.55	21.55
C57	50.000	21.55	21.55	21.55	21.55
C58	50.000	21.55	21.55	21.55	21.55
C59	50.000	21.55	21.55	21.55	21.55
C60	50.000	21.55	21.55	21.55	21.55
C61	50.000	21.55	21.55	21.55	21.55
C62	50.000	21.55	21.55	21.55	21.55
C63	50.000	21.55	21.55	21.55	21.55
C64	50.000	21.55	21.55	21.55	21.55
C65	50.000	21.55	21.55	21.55	21.55
C66	50.000	21.55	21.55	21.55	21.55
C67	50.000	21.55	21.55	21.55	21.55
C68	50.000	21.55	21.55	21.55	21.55

OWNER	SECTION	AREA	ACRES	PERMITS	INVESTMENT
C1	50.000	24.11	29.27	30.00	12.00
C2	50.000	21.55	21.55	21.55	21.55
C3	50.000	21.55	21.55	21.55	21.55
C4	50.000	21.55	21.55	21.55	21.55
C5	50.000	21.55	21.55	21.55	21.55
C6	50.000	21.55	21.55	21.55	21.55
C7	50.000	21.55	21.55	21.55	21.55
C8	50.000	21.55	21.55	21.55	21.55
C9	50.000	21.55	21.55	21.55	21.55
C10	50.000	21.55	21.55	21.55	21.55
C11	50.000	21.55	21.55	21.55	21.55
C12	50.000	21.55	21.55	21.55	21.55
C13	50.000	21.55	21.55	21.55	21.55
C14	50.000	21.55	21.55	21.55	21.55
C15	50.000	21.55	21.55	21.55	21.55
C16	50.000	21.55	21.55	21.55	21.55
C17	50.000	21.55	21.55	21.55	21.55
C18	50.000	21.55	21.55	21.55	21.55
C19	50.000	21.55	21.55	21.55	21.55
C20	50.000	21.55	21.55	21.55	21.55
C21	50.000	21.55	21.55	21.55	21.55
C22	50.000	21.55	21.55	21.55	21.55
C23	50.000	21.55	21.55	21.55	21.55
C24	50.000	21.55	21.55	21.55	21.55
C25	50.000	21.55	21.55	21.55	21.55
C26	50.000	21.55	21.55	21.55	21.55
C27	50.000	21.55	21.55	21.55	21.55
C28	50.000	21.55	21.55	21.55	21.55
C29	50.000	21.55	21.55	21.55	21.55
C30	50.000	21.55	21.55	21.55	21.55
C31	50.000	21.55	21.55	21.55	21.55
C32	50.000	21.55	21.55	21.55	21.55
C33	50.000	21.55	21.55	21.55	21.55
C34	50.000	21.55	21.55	21.55	21.55
C35	50.000	21.55	21.55	21.55	21.55
C36	50.000	21.55	21.55	21.55	21.55
C37	50.000	21.55	21.55	21.55	21.55
C38	50.000	21.55	21.55	21.55	21.55
C39	50.000	21.55	21.55	21.55	21.55
C40	50.000	21.55	21.55	21.55	21.55
C41	50.000	21.55	21.55	21.55	21.55
C42	50.000	21.55	21.55	21.55	21.55
C43	50.000	21.55	21.55	21.55	21.55
C44	50.000	21.55	21.55	21.55	21.55
C45	50.000	21.55	21.55	21.55	21.55
C46	50.000	21.55	21.55	21.55	21.55
C47	50.000	21.55	21.55	21.55	21.55
C48	50.000	21.55	21.55	21.55	21.55
C49	50.000	21.55	21.55	21.55	21.55
C50	50.000	21.55	21.55	21.55	21.55
C51	50.000	21.55	21.55	21.55	21.55
C52	50.000	21.55	21.55	21.55	21.55
C53	50.000	21.55	21.55	21.55	21.55
C54	50.000	21.55	21.55	21.55	21.55
C55	50.000	21.55	21.55	21.55	21.55
C56	50.000	21.55	21.55	21.55	21.55
C57	50.000	21.55	21.55	21.55	21.55
C58	50.000	21.55	21.55	21.55	21.55
C59	50.000	21.55	21.55	21.55	21.55
C60	50.000	21.55	21.55	21.55	21.55
C61	50.000	21.55	21.55	21.55	21.55
C62	50.000	21.55	21.55	21.55	21.55
C63	50.000	21.55	21.55	21.55	21.55
C64	50.000	21.55	21.55	21.55	21.55
C65	50.000	21.55	21.55	21.55	21.55
C66	50.000	21.55	21.55	21.55	21.55
C67	50.000	21.55	21.55	21.55	21.55
C68	50.000	21.55	21.55	21.55	21.55



LINE	REVISION	DATE	BY	REASON
1				
2				
3				
4				
5				
6				
7				
8				
9				
10				
11				
12				
13				
14				
15				
16				
17				
18				
19				
20				
21				
22				
23				
24				
25				
26				
27				
28				
29				
30				
31				
32				
33				
34				
35				
36				
37				
38				
39				
40				
41				
42				
43				
44				
45				
46				
47				
48				
49				
50				
51				
52				
53				
54				
55				
56				
57				
58				
59				
60				
61				
62				
63				
64				
65				
66				
67				
68				
69				
70				
71				
72				
73				
74				
75				
76				
77				
78				
79				
80				
81				
82				
83				
84				
85				
86				
87				
88				
89				
90				
91				
92				
93				
94				
95				
96				
97				
98				
99				
100				

CERTIFICATE OF APPROVAL FOR RECORDING
 THE SUBMISSION OF THIS MAP AND THE RECORDING OF THIS MAP IS HEREBY
 CERTIFIED TO BE IN ACCORDANCE WITH THE REQUIREMENTS OF THE
 PLANNING COMMISSION AND THAT IT IS THE POLICY OF THE CITY OF
 KNOXVILLE TO SUPPORT THE DEVELOPMENT OF THIS PROJECT IN THE
 INTEREST OF THE PUBLIC GOOD AND THE WELFARE OF THE CITY.
 DATE _____ 20 _____ SECRETARY, PLANNING COMMISSION

CERTIFICATE OF APPROVAL FOR UNITS
 THE SUBMISSION OF THIS MAP AND THE RECORDING OF THIS MAP IS HEREBY
 CERTIFIED TO BE IN ACCORDANCE WITH THE REQUIREMENTS OF THE
 PLANNING COMMISSION AND THAT IT IS THE POLICY OF THE CITY OF